



Metal Brackets

Section 1



Bondable Metal Brackets

Prestige Roth

Nickel-Free Prestige Roth

MBT

Mini Twin

Roth

Bio-Progressive

Andrews

Alexander

Standard Twin & Tweed Edgewise

V-slot

Weldable Brackets

Twins & Single

Lewis & Lang

Light Wires

Gold Brackets

Roth

CALL TOLL FREE TODAY!! 1-800-752-8884
We accept Visa, Mastercard & American Express

45 Koch Road, Suite G
Corte Madera, CA 94925

PYRAMID
ORTHODONTICS



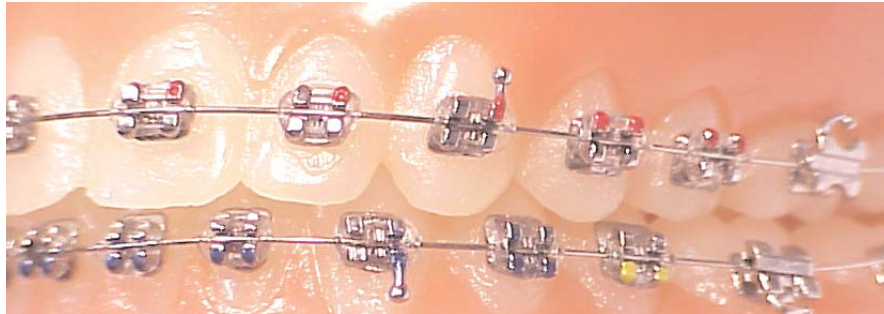
PRESTIGE™
Micro Straight Arch Metal
Bracket System

Pyramid Orthodontics has developed a metal injection molded bracket with undercuts equal to foil mesh.

The Prestige™ Micro Straight Arch Metal Bracket System has 100 undercuts per base and has been tested and proven to work as well as or slightly better than traditional foil mesh.

Other Features Include:

- ✓ Deep tie wing design allows double tie of ligature and power chain
- ✓ Smooth rounded corners for added patient comfort
- ✓ Lower Bicuspid bracket gingivally offset on pad to allow accurate placement
- ✓ Compound contour base with 100 undercuts per base
- ✓ Removable color code dot for easy bracket placement
- ✓ Available in Regular, Nickel-Free, or 24K Gold Coated
- ✓ Available with Hooks on the Cuspids and Bicuspids
- ✓ Permanent ID markers
- ✓ Long Axis Scribe line
- ✓ .018 and .022 Slots
- ✓ Roth Specifications



Brkt ID	MAXILLARY	T	A	.018R	.018L	.022R	.022L
				MICRO		MICRO	
	Central	12	5	140-101	140-102	141-101	141-102
	Central	22	5	140-103	140-104	141-103	141-104
	Lateral	8	9	140-113	140-114	141-113	141-114
	Lateral	14	9	140-115	140-115	141-115	141-115
	Cuspid	-2	13	140-127	140-128	141-127	141-128
	Cuspid w/hk	-2	13	140-133	140-134	141-133	141-134
	Bicuspid	-7	0	140-137	140-137	141-137	141-137
	Bicuspid w/hk	-7	0	140-143	140-144	141-143	141-144
	Bicuspid w/hk	0	0	140-141	140-142	141-141	141-142
	MANDIBULAR						
	Lower Anterior	-1	0	140-149	140-149	141-149	141-149
	Cuspid	-11	7	140-163	140-164	141-163	141-164
	Cuspid w/hk	-11	7	140-169	140-170	141-169	141-170
	1st Bicuspid	-17	0	140-173	140-173	141-173	141-173
	1st Bicuspid w/hk	-17	1	140-181	140-182	141-181	141-182
	1st Bicuspid w/hk	0	0	140-142	140-141	141-142	141-141
	2nd Bicuspid	-22	0	140-185	140-185	141-185	141-185
	2nd Bicuspid w/hk	-22	1	140-193	140-194	141-193	141-194



Studies show that 1 in 10 people suffer from allergic reactions to nickel.

Now you can choose the Nickel-Free Prestige™ Straight Arch System from Pyramid Orthodontics, and treat all patients safely. The Prestige Micro Straight Arch Metal Bracket System has 100 undercuts per base and has been tested and proven to work as well as or slightly better than traditional foil mesh.

PRESTIGE™ Nickel-Free
Micro Straight Arch Metal
Bracket System

NICKEL-FREE

Other Features Include:

- ✓ Nickel-Free for sensitive patients
- ✓ Deep tie wing design allows double tie of ligature and power chain
- ✓ Smooth rounded corners for added patient comfort
- ✓ Lower Bicuspid bracket strategically offset on pad to allow accurate placement
- ✓ Compound contour base with 100 undercuts per base
- ✓ Removable color code dot for easy bracket placement
- ✓ Available in Silver Toned Nickel-Free or 24K Gold Coated Nickel-Free Brackets
- ✓ Long Axis Scribe line
- ✓ Permanent ID markers
- ✓ Available with Hooks on the Cuspids and Bicuspids
- ✓ .018 and .022 Slots
- ✓ Roth Specifications



Brkt ID	MAXILLARY	T	A	.018R	.018L	.022R	.022L	
				MICRO			MICRO	
	Central	12	5	142-101	142-102	143-101	143-102	
	Central	22	5	142-103	142-104	143-103	143-104	
	Lateral	8	9	142-113	142-114	143-113	143-114	
	Lateral	14	9	142-115	142-116	143-115	143-116	
	Cuspid	-2	13	142-127	142-128	143-127	143-128	
	Cuspid w/hk	-2	13	142-133	142-134	143-133	143-134	
	Bicuspid	-7	0	142-137	142-137	143-137	143-137	
	Bicuspid w/hk	-7	0	142-143	142-144	143-143	143-144	
	Bicuspid w/hk	0	0	142-141	142-142	143-141	143-142	
N/A	Single Conv BT	-10	10	142-147	142-148	143-147	143-148	
N/A	Single Non-Conv BT	-10	10	142-145	142-146	143-145	143-146	
	MANDIBULAR							
	Lower Anterior	-1	0	142-149	142-149	143-149	143-149	
	Cuspid	-11	7	142-163	142-164	143-163	143-164	
	Cuspid w/hk	-11	7	142-169	142-170	143-169	143-170	
	1st Bicuspid	-17	0	142-173	142-173	143-173	143-173	
	1st Bicuspid w/hk	-17	1	142-181	142-182	143-181	143-182	
	1st Bicuspid w/hk	0	0	142-142	142-141	143-142	143-141	
	2nd Bicuspid	-22	0	142-185	142-185	143-185	143-185	
	2nd Bicuspid w/hk	-22	1	142-193	142-194	143-193	143-194	
N/A	Single Conv BT	-25	4	142-195	142-196	143-195	143-196	
N/A	Single Non-Conv BT	-25	4	142-197	142-198	143-197	143-198	



**MBT™ - Mini Twin
Bracket System**

Dr. Richard McLaughlin, Dr. John Bennett, and Dr. Hugo Trevisi designed the MBT prescription to refine the preadjusted appliance. The MBT features provide several features that significantly improve clinical management of orthodontic cases. These features are as follows:

Anterior Tip - Reduced Anterior Tip was incorporated into the appliance to conform to Andrew's original research, and to dramatically reduce the anchorage needs of each case.

Upper Posterior Tip - Upper bicuspid brackets provided with 0 degree of tip to keep these teeth in a more upright (Class I) position. Upper molar brackets are provided with 0 degree of tip, which when placed parallel to the occlusal plane, introduces 5 degree of tip into the upper molars.

Lower Posterior Tip - Lower posterior tip in the first and second bicuspid brackets is maintained at 2 degree, to slightly incline those teeth forward (in a Class I direction). For the lower first and second molars, 0 degree tipped brackets are provided, which when placed parallel to the occlusal plane, introduces 2 degree of tip to these teeth.

Incisor Torque - Upper incisor brackets are provided with additional palatal root torque, while lower incisor brackets are provided with additional labial root torque. This adjustment aids in the correction of the most common torque problems occurring in the incisor areas.

Upper Cuspid, Bicuspid and Molar Torque - Upper cuspid and bicuspid brackets are provided with the normal -7 degree of torque. Upper molar brackets are provided with an additional -5 degree of buccal root torque (total -14 degree) to reduce palatal cusp interferences with these teeth.

Lower Cuspid, Bicuspid and Molar Torque - Reduced progressive buccal crown torque is provided in the brackets of the lower cuspids and lower posterior segments. This allows for buccal uprighting of these teeth, which is beneficial in most cases.

In/Out Modifications - Because upper second bicuspids are frequently smaller than upper first bicuspid, brackets with an additional .5mm of in/out compensation are provided for these. If upper bicuspid are the same size, upper first bicuspid brackets can be used on all upper bicuspid.



Brkt ID		T	A	.018R		.018L	.022R		.022L
	MAXILLARY				MINI				MINI
	Central	17	4	130-201		130-202	131-201		131-202
	Lateral	10	8	130-213		130-214	131-213		131-214
	Cuspid	-7	8	130-227		130-228	131-227		131-228
	Cuspid w/hk	-7	8	130-233		130-234	131-233		131-234
	Cuspid w/hk	0	8	130-230		130-231	131-230		131-231
	Bicuspid	-7	0	130-237		130-238	131-237		131-238
	Bicuspid w/hk	-7	0	130-243		130-244	131-243		131-244
N/A	1st Mo-Sngl Conv	-10	10	330-153		330-154	331-153		331-154
N/A	2nd Mo-Single	-10	10	340-153		340-154	341-153		341-154
	MANDIBULAR								
	Lower Anterior (mn)	-6	0	130-149		130-149	131-149		131-149
	Lower Anterior (std)	-6	0	130-150		130-150	131-150		131-150
	Cuspid	-6	3	130-263		130-264	131-263		131-264
	Cuspid w/hk	-6	3	130-269		130-270	131-269		131-270
	Cuspid w/hk	0	3	130-265		130-266	131-265		131-266
	1st Bicuspid	-12	2	130-273		130-274	131-273		131-274
	1st Bicuspid w/hk	-12	2	130-281		130-282	131-281		131-282
	2nd Bicuspid	-17	2	130-287		130-288	131-287		131-288
	2nd Bicuspid w/hk	-17	2	130-293		130-294	131-293		131-294
N/A	1st Mo-Sngl Conv	-22	0	330-551		330-552	331-551		331-552
N/A	2nd Mo-Single	-27	0	340-551		340-552	341-551		341-552



**Roth - Mini Twin
Bracket System**



Brkt ID				.018R		.018L	.022R		.022L
	MAXILLARY	T	A		MINI			MINI	
	Central	12	5	130-101		130-102	131-101		131-102
	Lateral	8	9	130-113		130-114	131-113		131-114
	Cuspid	-2	11	130-127		130-128	131-127		131-128
	Cuspid w/hk	-2	11	130-133		130-134	131-133		131-134
	Bicuspid	-7	0	130-137		130-137	131-137		131-137
	Bicuspid w/hk	-7	0	130-143		130-144	131-143		131-144
N/A	1st Mo-Sngl Conv	-10	10	330-153		330-154	331-153		331-154
N/A	2nd Mo-Single	-10	10	340-153		340-154	341-153		341-154
	MANDIBULAR								
	Lower Anterior	0	0	130-149		130-149	131-149		131-149
	Cuspid	-11	5	130-163		130-164	131-163		131-164
	Cuspid w/hk	-11	5	130-169		130-170	131-169		131-170
	1st Bicuspid	-17	2	130-173		130-174	131-173		131-174
	1st Bicuspid w/hk	-17	2	130-181		130-182	131-181		131-182
	2nd Bicuspid	-22	2	130-185		130-186	131-185		131-186
	2nd Bicuspid w/hk	-22	2	130-193		130-194	131-193		131-194
N/A	1st Mo-Sngl Conv	-22	0	330-551		330-552	331-551		331-552
N/A	2nd Mo-Single	-27	0	340-551		340-552	341-551		341-552



**Roth Technique - Micro
Bondable Mesh Brackets**

Pyramid Bondable Foil Mesh Brackets for quality and reliability.

Other Features Include:

- ✓ Authentic built in rotation control option on cuspids and bicuspids
- ✓ Rhomboidal shape with vertical scribe line for easy placement
- ✓ Permanent ID markers
- ✓ Deep tie wing design allows double tie of ligature and power chain
- ✓ Smooth rounded corners for added patient comfort
- ✓ Lower Bicuspid bracket strategically offset on pad to allow accurate placement
- ✓ Authentic Compound contour base
- ✓ Removable color code dot for easy bracket placement
- ✓ Available with Hooks on the Cuspids and Bicuspids
- ✓ .018 and .022 Slots

Right Brkt ID	Left Brkt ID				.018R	.018L	.022R	.022L
		MAXILLARY	T	A	MICRO		MICRO	
		Central	12	5	180-101	180-102	181-101	181-102
		Lateral	8	9	180-113	180-114	181-113	181-114
		Cuspid	-2	10	180-127	180-128	181-127	181-128
		Cuspid w/hk	-2	10	180-133	180-134	181-133	181-134
		Bicuspid	-7	0	180-137	180-138	181-137	181-138
		Bicuspid w/hk	-7	0	180-143	180-144	181-143	181-144
N/A	N/A	1st Mo-Sngl Conv	-10	10	330-153	330-154	331-153	331-154
N/A	N/A	2nd Mo-Single	-10	10	340-153	340-154	341-153	341-154
		MANDIBULAR						
N/A	N/A	Lower Anterior	0	0	180-149	180-149	181-149	181-149
		Cuspid	-11	7	180-163	180-164	181-163	181-164
		Cuspid w/hk	-11	7	180-169	180-170	181-169	181-170
		1st Bicuspid	-17	0	180-173	180-174	181-173	181-174
		1st Bicuspid	-11	0	180-373	180-373	181-373	181-373
		1st Bicuspid w/hk	-17	0	180-181	180-182	181-181	181-182
		2nd Bicuspid	-22	0	180-185	180-186	181-185	181-186
		2nd Bicuspid	-17	0	180-386	180-386	181-386	181-386
		2nd Bicuspid w/hk	-22	0	180-193	180-194	181-193	181-194
N/A	N/A	1st Mo-Sngl Conv	-22	0	330-551	330-552	331-551	331-552
N/A	N/A	2nd Mo-Single	-27	0	340-551	340-552	341-551	341-552



Bio-Progressive Technique and Ricketts/Hilgers - Micro Bondable Mesh Brackets

Pyramid Bondable Foil Mesh Brackets for quality and reliability.

Other Features Include:

- ✓ Rhomboidal shape with vertical scribe line for easy placement
- ✓ Permanent ID markers
- ✓ Deep tie wing design allows double tie of ligature and power chain
- ✓ Smooth rounded corners for added patient comfort
- ✓ Lower Bicuspid bracket strategically offset on pad to allow accurate placement
- ✓ Authentic Compound contour base
- ✓ Removable color code dot for easy bracket placement
- ✓ Available with Hooks on the Cuspids and Bicuspids
- ✓ .018 and .022 Slots
- ✓ Bio-Progressive Specifications



Right Brkt ID	Left Brkt ID		T	A	.018R	.018L	.022R	.022L
		MAXILLARY						
					MICRO			
		Central	22	5	180-401	180-402	181-401	181-402
		Lateral	14	8	180-413	180-414	181-413	181-414
		Cuspid	7	7	180-427	180-428	181-427	181-428
		Cuspid w/hk	7	7	180-433	180-434	181-433	181-434
		Cuspid	7	11	180-425	180-426	181-425	181-426
		Cuspid w/hk	7	11	180-435	180-436	181-435	181-436
		Bicuspid	0	0	180-438	180-438	181-438	181-438
		Bicuspid	-7	0	180-437	180-437	181-437	181-437
		Bicuspid w/hk	-7	0	180-443	180-444	181-443	181-444
N/A	N/A	1st Mo-Sngl Conv	-10	10	330-153	330-154	331-153	331-154
N/A	N/A	2nd Mo-Single	-10	10	340-153	340-154	341-153	341-154
		MANDIBULAR						
N/A	N/A	Lower Anterior	0	0	180-449	180-449	181-449	181-449
		Cuspid	7	5	180-463	180-463	181-463	181-464
		Cuspid w/hk	7	5	180-469	180-469	181-469	181-469
		1st Bicuspid	0	0	180-475	180-475	181-475	181-475
		1st Bicuspid	-11	0	180-473	180-474	181-473	181-474
		1st Bicuspid w/hk	-11	0	180-481	180-482	181-481	181-482
		2nd Bicuspid	0	0	180-475	180-475	181-475	181-475
		2nd Bicuspid	-17	0	180-485	180-485	181-485	181-485
		2nd Bicuspid w/hk	-17	0	180-493	180-494	181-493	181-494
N/A	N/A	1st Mo-Sngl Conv	-22	0	330-551	330-552	331-551	331-552
N/A	N/A	2nd Mo-Single	-27	0	340-551	340-552	341-551	341-552



Andrews Technique - Mini Bondable Mesh Brackets

Pyramid Bondable Foil Mesh Brackets for quality and reliability.

Other Features Include:

- ✓ Rhomboidal shape with vertical scribe line for easy placement
- ✓ Permanent ID markers
- ✓ Deep tie wing design allows double tie of ligature and power chain
- ✓ Smooth rounded corners for added patient comfort
- ✓ Lower Bicuspid bracket strategically offset on pad to allow accurate placement
- ✓ Authentic Compound contour base
- ✓ Removable color code dot for easy bracket placement
- ✓ Available with Hooks on the Cuspids and Bicuspids
- ✓ .018 and .022 Slots

Brkt ID	MAXILLARY	T	A	.018R	MINI	.018L	.022R	MINI	.022L
	Central	7	5	130-301		130-302	131-301		131-302
	Lateral	3	9	130-313		130-313	131-313		131-314
	Cuspid	-7	11	130-325		130-326	131-325		131-326
	Cuspid w/hk	-7	11	130-331		130-332	131-331		131-332
	Bicuspid	-7	2	130-337		130-338	131-337		131-338
	Bicuspid w/hk	-7	2	130-343		130-344	131-343		131-344
N/A	1st Mo-Sngl Conv	-10	10	330-153		330-154	331-153		331-154
N/A	2nd Mo-Single	-10	10	340-153		340-154	341-153		341-154
	MANDIBULAR								
	Lower Anterior	-1	2	130-349		130-350	131-349		131-350
	Cuspid	-11	9	130-361		130-362	131-361		131-362
	Cuspid w/hk	-11	9	130-367		130-368	131-367		131-368
	1st Bicuspid	-17	2	130-373		130-374	131-373		131-374
	1st Bicuspid w/hk	-17	2	130-379		130-380	131-379		131-380
	2nd Bicuspid	-22	2	130-385		130-386	131-385		131-386
	2nd Bicuspid w/hk	-22	2	130-391		130-392	131-391		131-392
N/A	1st Mo-Sngl Conv	-22	0	330-551		330-552	331-551		331-552
N/A	2nd Mo-Single	-27	0	340-551		340-552	341-551		341-552



Alexander Technique - Micro Bondable Mesh Brackets

Pyramid Bondable Foil Mesh Brackets for quality and reliability.

Other Features Include:

- ✓ Available with Hooks on Laterals
- ✓ Rhomboidal shape with vertical scribe line for easy placement
- ✓ Permanent ID markers
- ✓ Deep tie wing design allows double tie of ligature and power chain
- ✓ Smooth rounded corners for added patient comfort
- ✓ Lower Bicuspid bracket strategically offset on pad to allow accurate placement
- ✓ Authentic Compound contour base
- ✓ Removable color code dot for easy bracket placement
- ✓ Available with Hooks on the Cuspids and Bicuspids
- ✓ .018 and .022 Slots

Right Brkt ID	Left Brkt ID				.018R		.018L	.022R		.022L
		MAXILLARY	T	A	MICRO			MICRO		
		Central	14	5	180-501		180-502	181-501		181-502
		Lateral w/hk	7	8	180-513		180-514	181-513		181-514
		Cuspid	-3	10	180-525		180-526	181-525		181-526
		Cuspid w/hk	-3	10	180-527		180-528	181-527		181-528
		Bicuspid	-7	0	180-537		180-537	181-537		181-537
N/A	N/A	1st Mo-Sngl Conv	-10	10	330-153		330-154	331-153		331-154
N/A	N/A	2nd Mo-Single	-10	10	340-153		340-154	341-153		341-154
		MANDIBULAR								
		Central	-5	0	180-549		180-549	181-549		181-549
		Lateral w/hk	-5	0	180-551		180-551	181-551		181-551
		Cuspid	-7	6	180-561		180-562	181-561		181-562
		Cuspid w/hk	-7	6	180-567		180-568	181-567		181-568
		1st Bicuspid	-11	0	180-573		180-573	181-573		181-573
		2nd Bicuspid	-17	0	180-585		180-585	181-585		181-585
N/A	N/A	1st Mo-Sngl Conv	-22	0	330-551		330-552	331-551		331-552
N/A	N/A	2nd Mo-Single	-27	0	340-551		340-552	341-551		341-552



**Standard Twin &
Tweed Edgewise Technique
Bondable Mesh Brackets**

Pyramid Bondable Foil Mesh Brackets for quality and reliability.

Other Features Include:

- ✓ Permanent ID markers
- ✓ Deep tie wing design allows double tie of ligature and power chain
- ✓ Smooth rounded corners for added patient comfort
- ✓ Lower Bicuspid bracket strategically offset on pad to allow accurate placement
- ✓ Authentic Compound contour base
- ✓ Removable color code dot for easy bracket placement
- ✓ Available with Hooks on the Cuspids and Bicuspids
- ✓ .018 and .022 Slots

Micro Standard Metal

Full Standard Metal

Tweed Single Wing

			.018	.022	.018	.022	.018	.022
MAXILLARY	T	A	MICRO		FULL		MINI	
Central	0	0	180-601	181-601	120-601	121-601	180-701	181-701
Lateral	0	0	180-613	181-613	120-613	121-613	180-713	181-713
Cuspid	0	0	180-625	181-625	120-625	121-625	180-725	181-725
Bicuspid	0	0	180-626	181-626	120-625	121-625	180-726	181-726
R 1st Mo-Sngl Conv	0	0	330-111	331-111	320-101	321-101	330-102	331-102
L 1st Mo-Sngl Conv			330-112	331-112	320-102	321-102	330-101	331-101
R 2nd Mo-Single	0	0	340-103	341-103	310-103	311-103	340-103	341-103
L 2nd Mo-Single			340-104	341-104	310-104	311-104	340-104	341-104
MANDIBULAR								
Lower Anterior	0	0	180-649	181-649	120-649	121-649	180-749	181-749
Cuspid	0	0	180-625	181-625	120-625	121-625	180-725	181-725
1st Bicuspid	0	0	180-626	181-626	120-625	121-625	180-726	181-726
2nd Bicuspid	0	0	180-626	181-626	120-625	121-625	180-726	181-726
R 1st Mo-Sngl Conv	0	0	330-112	331-112	320-102	321-102	330-101	331-101
L 1st Mo-Sngl Conv			330-111	331-111	320-101	321-101	330-102	331-102
R 2nd Mo-Single	0	0	340-104	341-104	310-104	311-104	340-104	341-104
L 2nd Mo-Single			340-103	341-103	310-103	311-103	340-103	341-103



V-Slot Technique - Micro Bondable Mesh Brackets

Pyramid Bondable Foil Mesh Brackets for quality and reliability.

Other Features Include:

- ✓ Authentic built in rotation control option on cuspids and bicuspid
- ✓ Rhomboidal shape with vertical scribe line for easy placement
- ✓ Permanent ID markers
- ✓ Deep tie wing design allows double tie of ligature and power chain
- ✓ Smooth rounded corners for added patient comfort
- ✓ Lower Bicuspid bracket strategically offset on pad to allow accurate placement
- ✓ Authentic Compound contour base
- ✓ Removable color code dot for easy bracket placement
- ✓ Available with Hooks on the Cuspids and Bicuspid
- ✓ .018 and .022 Slots

Right Brkt ID	Left Brkt ID				.018R	.018L	.022R	.022L
		MAXILLARY	T	A	MICRO		MICRO	
		Central	14	5	160-001	160-002	161-001	161-002
		Lateral	8	9	160-013	160-014	161-013	161-014
		Cuspid	-2	10	160-025	160-026	161-025	161-026
		Cuspid w/hk	-2	10	160-033	160-034	161-033	161-034
		Bicuspid	-7	0	160-037	160-037	161-037	161-037
		Bicuspid w/hk	-7	0	160-043	160-044	161-043	161-044
N/A	N/A	1st Mo-Sngl Conv						
N/A	N/A	2nd Mo-Single						
		MANDIBULAR						
		Anteriors	0	0	160-049	160-049	161-049	161-049
		Cuspid	-7	7	160-061	160-062	161-061	161-062
		Cuspid w/hk	-7	7	160-069	160-070	161-069	161-070
		1st Bicuspid	-11	0	160-073	160-073	161-073	161-073
		1st Bicuspid w/hk	-11	0	160-079	160-080	161-079	161-080
		2nd Bicuspid	-17	0	160-085	160-085	161-085	161-085
		2nd Bicuspid w/hk	-17	0	160-091	160-092	161-091	161-092
N/A	N/A	1st Mo-Sngl Conv						
N/A	N/A	2nd Mo-Single						

Right Brkt ID	Left Brkt ID				.018R	.018L	.022R	.022L
		MAXILLARY	T	A	MICRO		MICRO	
		Central	14	5	180-001	180-002	181-001	181-002
		Lateral	8	9	180-013	180-014	181-013	181-014
		Cuspid	-2	10	180-025	180-026	181-025	181-026
		Cuspid w/hk	-2	10	180-033	180-034	181-033	181-034
		Bicuspid	-7	0	180-037	180-037	181-037	181-037
N/A	N/A	1st Mo-Sngl Conv						
N/A	N/A	2nd Mo-Single						
		MANDIBULAR						
		Anteriors	0	0	180-049	180-049	181-049	181-049
		Cuspid	-7	7	180-061	180-062	181-061	181-062
		Cuspid w/hk	-7	7	180-069	180-070	181-069	181-070
		1st Bicuspid	-11	0	180-073	180-073	181-073	181-073
		2nd Bicuspid	-17	0	180-085	180-085	181-085	181-085
N/A	N/A	1st Mo-Sngl Conv						
N/A	N/A	2nd Mo-Single						



Weldable Brackets

Torqued Twin Brackets

WEDGE * Hooks available on request			
	Torque	Slot	Order #
NARROW TWIN 100	+7°	.018	125-037
	0°	.018	125-039
		.022	126-039
	-7°	.018	125-041
		.022	126-041
	-11°	.018	125-043
		.022	126-043
	-17°	.018	125-045
		.022	126-045
	-22°	.018	125-047
		.022	126-047
	MEDIUM TWIN 130	+7°	.018
0°		.018	115-039
		.022	116-039
-7°		.018	115-041
		.022	116-041
-11°		.018	115-043
		.022	116-043
-17°		.018	115-045
		.022	116-045
-22°		.018	115-047
		.022	116-047
WIDE TWIN 173		+7°	.018
	0°	.018	105-039
		.022	106-039
	-7°	.018	105-041
		.022	106-041
	-11°	.018	105-043
		.022	106-043
	-17°	.018	105-045
		.022	106-045
	-22°	.018	105-047
		.022	106-047

Lewis and Lang

LEWIS WEDGE * Hooks available on request				
	Torque	Slot	Order #	
NARROW TWIN 177	0°	.018	125-837	
		.022	126-837	
	-7°	.018	125-839	
		.022	126-839	
	-11°	.018	125-841	
		.022	126-841	
	-17°	.018	125-845	
		.022	126-845	
	MEDIUM TWIN 198	0°	.018	115-837
			.022	116-837
		-7°	.018	115-839
			.022	116-839
-11°		.018	115-841	
		.022	116-841	
-17°	.018	115-845		
	.022	116-845		
WIDE TWIN 248	-7°	.018	105-839	
		.022	106-839	
	-11°	.018	105-841	
		.022	106-841	
	-17°	.018	105-845	
		.022	106-845	

LANG			
	Torque	Slot	Order #
NARROW WING 186	-3°	.018	125-937
		.022	125-939
MEDIUM WING 186	-3°	.018	115-937
		.022	115-939
WIDE WING 186	-3°	.018	105-937
		.022	105-939

Standard Edgewise

STANDARD PROFILE		
	Slot	Order #
SINGLE (.080)	.018	105-637
	.022	106-637
DBL WIDE SNGL (.100)	.018	105-639
	.022	106-639
NAR TWIN (.100)	.018	105-641
	.022	106-641
MED TWIN (.130)	.018	105-645
	.022	106-645
WIDE TWIN (.173)	.018	105-647
	.022	106-647

LANG			
	Torq	Slot	Order #
NAR WING	0°	.018	125-537
FLAT (.177)		.022	126-537
MED WING	0°	.018	115-537
FLAT (.202)		.022	116-537
WIDE WING	0°	.018	105-537
FLAT DBL WIDTH(.300)		.022	106-537

LIGHT WIRE BRACKETS		
	Slot	Order #
FLAT BASE	.020	106-725
CRVD BASE	.020	106-701



Extra Page for Related Products

CALL TOLL FREE TODAY!! 1-800-752-8884
We accept Visa, Mastercard & American Express

45 Koch Road, Suite G
Corte Madera, CA 94925

PYRAMID
ORTHODONTICS



PRESTIGE™ 24K GOLD
Micro Straight Arch Metal
Bracket System

Studies show that 1 in 10 people suffer from allergic reactions to nickel. Now you can choose the 24K Prestige™ Micro Straight Arch System from Pyramid Orthodontics, and treat all patients safely.

The Prestige™ Micro Straight Arch Metal Bracket System has 100 undercuts per base and has been tested and proven to work as well as or slightly better than traditional foil mesh.

Other Features Include:

- ✓ 24K Gold for sensitive patients
- ✓ Permanent ID markers
- ✓ Deep tie wing design allows double tie of ligature and power chain
- ✓ Smooth rounded corners for added patient comfort
- ✓ Lower Bicuspid bracket strategically offset on pad to allow accurate placement
- ✓ Compound contour base with 100 undercuts per base
- ✓ Long Axis Scribble
- ✓ Available with Hooks on the Cuspids and Bicuspids
- ✓ .018 and .022 Slots
- ✓ Roth Specifications

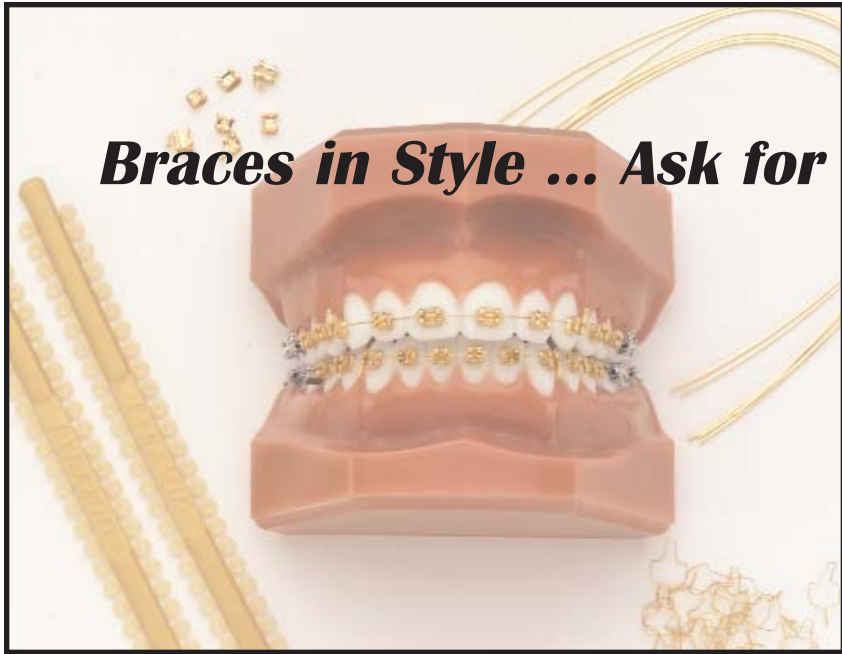


Brkt ID				.018R		.018L	.022R		.022L
	MAXILLARY	T	A	MICRO		MICRO			
	Central	12	5	G32-101		G32-102	G33-101		G33-102
N	Central	22	5	G32-103		G32-104	G33-103		G33-104
O	Lateral	8	9	G32-113		G32-114	G33-113		G33-114
	Lateral	14	9	G32-115		G32-116	G33-115		G33-116
C	Cuspid	-2	13	G32-127		G32-128	G33-127		G33-128
O	Cuspid w/hk	-2	13	G32-133		G32-134	G33-133		G33-134
L	Bicuspid	-7	0	G32-137		G32-137	G33-137		G33-137
O	Bicuspid w/hk	-7	0	G32-143		G32-144	G33-143		G33-144
R	Bicuspid w/hk	0	0	G32-141		G32-142	G33-141		G33-142
	1st Mo-Sngl Conv	-10	6	G330-151		G330-152	G331-151		G331-152
	2nd Mo-Single	-10	6	G340-153		G340-154	G341-153		G341-154
	MANDIBULAR								
C	Lower Anterior	-1	0	G32-149		G32-149	G33-149		G33-149
O	Cuspid	-11	7	G32-163		G32-164	G33-163		G33-164
D	Cuspid w/hk	-11	7	G32-169		G32-170	G33-169		G33-170
E	1st Bicuspid	-17	0	G32-173		G32-173	G33-173		G33-173
	1st Bicuspid w/hk	-17	1	G32-181		G32-182	G33-181		G33-182
	1st Bicuspid w/hk	0	0	G32-142		G32-141	G33-142		G33-141
	2nd Bicuspid	-22	0	G32-185		G32-185	G33-185		G33-185
	2nd Bicuspid w/hk	-22	1	G32-193		G32-194	G33-193		G33-194
	1st Mo-Sngl Conv	-22	6	G330-551		G330-552	G331-551		G331-552
	2nd Mo-Single	-27	6	G340-553		G340-554	G341-553		G341-554



Don't forget to match the 24K Gold Coated Brackets with our 24K Gold Coated and Colored Products.

PRESTIGE™ 24K GOLD
Coated and Colored Products
(more wire shapes available)



Braces in Style ... Ask for Gold!

24K Metallic Gold Single Buccal Tubes

** other buccal tubes can be special ordered.

Bondable Single Convertible First Molar Tubes

Torque	Distal Offset		Prestige Micro		Prestige Micro	
			.018R	.018L	.022R	.022L
Single Upper						
-10°	6°		G330-151	G330-152	G331-151	G331-152
Single Lower						
0°	6°		G330-101	G330-102	G331-101	G331-102
-22°	6°		G330-551	G330-552	G331-551	G331-552
-25°	6°		G330-553	G330-554	G331-553	G331-554
-22°	0°		G330-555	G330-556	G331-555	G331-556

Bondable Single Second Molar Tubes

Torque	Distal Offset		Prestige Micro		Prestige Micro	
			.018R	.018L	.022R	.022L
Upper 2nd Molar						
-10°	10°	no dist ext	G340-153	G340-154	G341-153	G341-154
Lower 2nd Molar						
-27°	6°	no dist ext	G340-553	G340-554	G341-553	G341-554
-20°	6°	no dist ext	G340-557	G340-558	G341-557	G341-558

*****our 24K Metallic Gold Coating makes regular Stainless Steel products safe for Nickel Sensitive patients. Ask us about our Nickel-Free Regular Metal Brackets and Buccal Tubes.**

24K Gold Full Form Archwires		
Stainless Steel		
Size	Upper	Lower
.012	G400-301	G400-351
.014	G400-302	G400-352
.016	G400-303	G400-353
.018	G400-304	G400-354
.020	G400-305	G400-355
16 X 16	G400-306	G400-356
16 X 22	G400-307	G400-357
17 X 25	G400-308	G400-358
18 X 18	G400-309	G400-359
18 X 25	G400-310	G400-360
19 X 25	G400-311	G400-361
20 X 20	G400-313	G400-353
21 X 25	G400-312	G400-362
24K Gold Full Form Archwires		
Nitinol SE		
Size	Upper	Lower
.012	G410-301	G410-351
.014	G410-302	G410-352
.016	G410-303	G410-353
.018	G410-304	G410-354
.020	G410-305	G410-355
16 X 16	G410-306	G410-356
16 X 22	G410-307	G410-357
17 X 25	G410-308	G410-358
18 X 18	G410-309	G410-359
18 X 25	G410-310	G410-360
19 X 25	G410-311	G410-361
20 X 20	G410-313	G410-353
21 X 25	G410-312	G410-362

24K Gold Ligatures	
Performed Ligs .010	G450-102
Shorty Ligs .010	G450-310
Kobayashi Ties .010	G450-301
Shorty kobys .010	G450-303
24K Gold Colored Ties & Chain	
Reg Stick Ties	525-193
Mini Stick Ties	525-093
Chain - Closed	525-443
Chain - Short	525-439
Chain - Long	525-451
24K Gold Facebows	
Standard Facebow	G510-100

Special Order Available:
We will 24K Coat any of your Stainless Steel or Nitinol Items. Please call, email, or fax us today for a quote!

Don't forget, you may need Bands, Lingual Buttons Lingual Sheaths, Hooks, Stops, etc... for your Nickel Sensitive Patient !