

STANDARD WELD POSITION

Labial

Pre-welding definitions:

Standard weld position. The drawings on the right provide an overview of various standard positions. As the drawings illustrate, standard position instructs the attachment to be welded at 0 degree angulation to the band (the bracket slot will parallel the occlusal edge of the band).

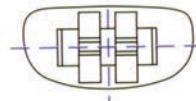
Custom weld position:

Custom assemblies include any Pyramid brackets and bands pre-welded in other than standard position. If you desire a custom placement, please indicate direction and amount of change from standard (i.e., 1/2mm more occlusal). If specifying a custom angulation, please indicate in * (+) positive or (-) negative terms. If no position criteria is provided on the order, standard will be assumed. Custom items are not returnable.

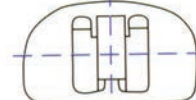
- * (+) positive - distal root tip
- (-) negative - mesial root tip

Bands are available plain or with pre-welded attachments. Please specify lingual as well as buccal attachments. Minimum order of ten bands.

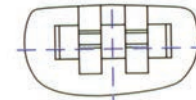
Bracket to Bicuspid



Lower 1st Bicuspid: Centered



Upper Bicuspid: Centered



Lower 2nd Bicuspid
Offset to Occlusal .010

Buccal Tube to Upper Molar



Upper Molar – Entrance to buccal tube will bisect the mesial/buccal cusp

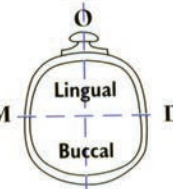
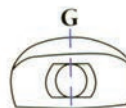
Buccal Tube to Lower Molar



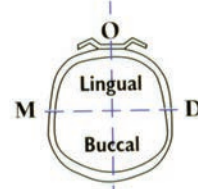
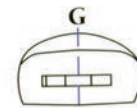
Lower Molar – Entrance to buccal tube will bisect the mesial/buccal cusp

Lingual Attachments

Bicuspids

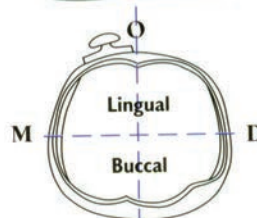
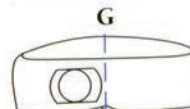


Button: Centered

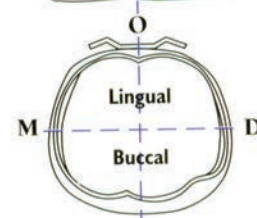
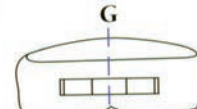


Cleat: Centered

Molars



Button: Bisect the mesiolingual cusp



Cleat: Centered



Custom Fit Bicuspid Bands

Custom Fit Molar Bands

Easy Fit Molar Bands:

Precision

Acura

Supra

Ultima

Lingual Attachments for bands



Custom Fit - Type I Bicuspid Bands

Extra Attachments for Bands	
Texturizing	200-000
Small Cleat 5mm	501-421
Flat Ling Button	501-321
Curved Ling Button	501-322

Features Include:

- ✓ Shape according to Ormco bands
- ✓ Anatomy is completely proportioned in all dimensions
- ✓ Attachments come in .018 and .022 Slots
- ✓ Permanent Laser Markings
- ✓ Band sizes:
 - Upper Bicuspids sizes 1-32
 - Lower 1st Bicuspids sizes 1-32
 - Lower 2nd Bicuspids sizes 5-32

Univ Upper Bicuspid

Band Size	1	2	3	4	5	6	7	8	9	10	11	12	13	14	15	16	17	18	19	20	21	22	23	24	25	26	27	28	29	30	31	32		

Lower 1st Bicuspid

Band Size	1	2	3	4	5	6	7	8	9	10	11	12	13	14	15	16	17	18	19	20	21	22	23	24	25	26	27	28	29	30	31	32		

Lower 2nd Bicuspid

Band Size	5	6	7	8	9	10	11	12	13	14	15	16	17	18	19	20	21	22	23	24	25	26	27	28	29	30	31	32					

Custom Fit First Bicuspids	Band ID	Seating Lug	Individual (1)	Introductory (200)	Professional (400)	Master (800)
MAXILLARY		With Lugs	230-730	230-721	230-711	230-701
		Without Lugs	230-735	230-722	230-712	230-702
MANDIBULAR		With Lugs	230-732	230-723	230-713	230-703
		Without Lugs	230-737	230-724	230-714	230-704

Custom Fit Second Bicuspids	Band ID	Seating Lug	Individual (1)	Introductory (200)	Professional (400)	Master (800)
MAXILLARY		With Lugs				
		Without Lugs				
MANDIBULAR		With Lugs	230-740	230-725	230-715	230-705
		Without Lugs	230-742	230-726	230-716	230-706

Custom Fit Molar Bands

Extra Attachments for Bands	
Texturizing	200-000
Small Cleat, 5mm	501-421
Reg Cleat, 6.9mm	501-423
Flat Ling Button	501-321
Curved Ling Button	501-322
Ling Sheath w/no lock No Window .036	502-600
Ling Sheath w/lock indent window .036	502-602
Ling Sheath UR/LL Mes-Dist hk .036	502-605

Features Include:

- ✓ Shape according to Ormco Washbon bands
- ✓ Ultimate in secure retention and perfect fit due to tapering of material thickness
- ✓ Right and left anatomy is completely proportioned in all dimensions
- ✓ Attachments come in .018 and .022 Slots
- ✓ Permanent Laser Markings
- ✓ Band sizes:
 - Upper & Lower 1st Molars sizes 1-32
 - Upper 2nd Molars sizes 97-00,1-28
 - Lower 2nd Molars sizes 1-32

1st Molars

Band Size	1	2	3	4	5	6	7	8	9	10	11	12	13	14	15	16	17	18	19	20	21	22	23	24	25	26	27	28	29	30	31	32	

2nd Molars

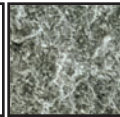
Upper Size	97	98	99	00	1	2	3	4	5	6	7	8	9	10	11	12	13	14	15	16	17	18	19	20	21	22	23	24	25	26	27	28
Lower Size	1	2	3	4	5	6	7	8	9	10	11	12	13	14	15	16	17	18	19	20	21	22	23	24	25	26	27	28	29	30	31	32

Custom Fit First Molars	Band ID	Seating Lug	Individual (1)	Introductory (200)	Professional (400)	Master (800)
MAXILLARY		With Lugs	210-725	210-721	210-711	210-701
		Without Lugs	210-730	210-722	210-712	210-702
MANDIBULAR		With Lugs	210-727	210-723	210-713	210-703
		Without Lugs	210-732	210-724	210-714	210-704

Custom Fit Second Molars	Band ID	Seating Lug	Individual (1)	Introductory (200)	Professional (400)	Master (800)
MAXILLARY		With Lugs	220-725	220-721	220-711	220-701
		Without Lugs	220-730	220-722	220-712	220-702
MANDIBULAR		With Lugs	220-727	220-723	220-713	220-703
		Without Lugs	220-732	220-724	220-714	220-704

Extra Attachments for Bands		
Texturizing		200-000
Reg Cleat, 5.3mm		501-422
X-large Cleat, 8mm		501-424
Flat Ling Button		501-321
Curved Ling Button		501-322
Ling Sheath w/no lock No Window .036		502-600
Ling Sheath w/lock indent window .036		502-602
Ling Sheath UR/LL Mes-Dist hk .036		502-605

Picture of Texturized Surface of Band



Easy Fit - Precision Molar Bands



Features Include:

- ✓ Shape according to Unitek bands with a thinner band and a shorter wall height
- ✓ Offers the best fit in a fully proportioned band
- ✓ Straight proximal walls allow for fast setting
- ✓ Kit contains 1/2 rights, 1/2 lefts
- ✓ Attachments come in .018 and .022 Slots
- ✓ Permanent Laser Marking
- ✓ Even and half Band sizes:

Upper & Lower 1st Molars sizes
29.5-44

Upper 2nd Molars sizes
29.5-44

Lower 2nd Molars sizes
29.5-42

Upper & Lower 1st Molars	Band Size
	29.5 30 30.5 31 31.5 32 32.5 33 33.5 34 34.5 35 35.5 36 36.5 37 37.5 38 38.5 39 39.5 40 40.5 41 41.5 42 42.5 43 43.5 44

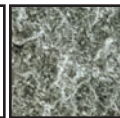
Upper 2nd Molars	Band Size
	29.5 30 30.5 31 31.5 32 32.5 33 33.5 34 34.5 35 35.5 36 36.5 37 37.5 38 38.5 39 39.5 40 40.5 41 41.5 42 42.5 43 43.5 44

Lower 2nd Molars	Band Size
	29.5 30 30.5 31 31.5 32 32.5 33 33.5 34 34.5 35 35.5 36 36.5 37 37.5 38 38.5 39 39.5 40 40.5 41 41.5 42

Easy Fit - Precision First Molars	Band ID	Seating Lug	Individual (1)	Introductory (150)	Professional (300)	Master (600)
MAXILLARY		With Lugs	203-725	203-721	203-711	203-701
		Without Lugs	203-730	203-722	203-712	203-702
MANDIBULAR		With Lugs	203-727	203-723	203-713	203-703
		Without Lugs	203-732	203-724	203-714	203-704

Easy Fit - Precision Second Molars	Band ID	Seating Lug	Individual (1)	Introductory (150)	Professional (300)	Master (600)
MAXILLARY		With Lugs	208-725	208-721	208-711	208-701
		Without Lugs	208-730	208-722	208-712	208-702
MANDIBULAR		With Lugs	208-727	208-723	208-713	208-703
		Without Lugs	208-732	208-724	208-714	208-704

Picture of Texturized Surface of Band



Easy Fit - Acura Molar Bands

Extra Attachments for Bands		
Texturizing		200-000
Reg Cleat, 5.3mm		501-422
X-large Cleat, 8mm		501-424
Flat Ling Button		501-321
Curved Ling Button		501-322
Ling Sheath w/no lock No Window .036		502-600
Ling Sheath w/lock indent window .036		502-602
Ling Sheath UR/LL Mes-Dist hk .036		502-605

Features Include:

- ✓ Shape according to Trimline bands
- ✓ Offers the best fit in a fully proportioned band
- ✓ Straight proximal walls allow for fast setting
- ✓ Kit contains 1/2 rights, 1/2 lefts
- ✓ Attachments come in .018 and .022 Slots
- ✓ Permanent Laser Marking
- ✓ Even Band sizes:

Upper & Lower 1st Molars sizes 1-32

Upper & Lower 2nd Molars sizes 1-32

1st Molars	Band Size
	1 2 3 4 5 6 7 8 9 10 11 12 13 14 15 16 17 18 19 20 21 22 23 24 25 26 27 28 29 30 31 32

2nd Molars	Band Size
	1 2 3 4 5 6 7 8 9 10 11 12 13 14 15 16 17 18 19 20 21 22 23 24 25 26 27 28 29 30 31 32

Easy Fit - Acura First Molars	Band ID	Seating Lug	Individual (1)	Introductory (150)	Professional (300)	Master (600)
MAXILLARY		With Lugs	204-725	204-721	204-711	204-701
		Without Lugs	204-730	204-722	204-712	204-702
MANDIBULAR		With Lugs	204-727	204-723	204-713	204-703
		Without Lugs	204-732	204-724	204-714	204-704

Easy Fit - Acura Second Molars	Band ID	Seating Lug	Individual (1)	Introductory (150)	Professional (300)	Master (600)
MAXILLARY		With Lugs	209-725	209-721	209-711	209-701
		Without Lugs	209-730	209-722	209-712	209-702
MANDIBULAR		With Lugs	209-727	209-723	209-713	209-703
		Without Lugs	209-732	209-724	209-714	209-704

CALL TOLL FREE TODAY!! 1-800-752-8884
We accept Visa, Mastercard & American Express

(phone) 415-479-6400
(fax) 415-479-2745



Easy Fit - Supra Molar Bands

Extra Attachments for Bands	
Texturizing	200-000
Small Cleat, 5mm	501-421
Large Cleat, 8mm	501-424
Flat Ling Button	501-321
Curved Ling Button	501-322
Ling Sheath w/no lock No Window .036	502-600
Ling Sheath w/lock indent window .036	502-602
Ling Sheath UR/LL Mes-Dist hk .036	502-605

Features Include:

- ✓ Shape according to Lancer Supra bands.
- ✓ Offers the best fit in a fully proportioned band
- ✓ Straight proximal walls allow for fast setting
- ✓ Kit contains 1/2 rights, 1/2 lefts
- ✓ Attachments come in .018 and .022 Slots
- ✓ Permanent Laser Marking
- ✓ Even and half Band sizes:
Upper & Lower 1st Molars sizes 29.5-44
Upper & Lower 2nd Molars sizes 29.5-44

1st Molars																													
Band Size																													
29.5	30	30.5	31	31.5	32	32.5	33	33.5	34	34.5	35	35.5	36	36.5	37	37.5	38	38.5	39	39.5	40	40.5	41	41.5	42	42.5	43	43.5	44

2nd Molars																													
Band Size																													
29.5	30	30.5	31	31.5	32	32.5	33	33.5	34	34.5	35	35.5	36	36.5	37	37.5	38	38.5	39	39.5	40	40.5	41	41.5	42	42.5	43	43.5	44

Easy Fit - Supra First Molars	Band ID	Seating Lug	Individual (1)	Introductory (150)	Professional (300)	Master (600)
MAXILLARY		With Lugs	202-725	202-721	202-711	202-701
		Without Lugs	202-730	202-722	202-712	202-702
MANDIBULAR		With Lugs	202-727	202-723	202-713	202-703
		Without Lugs	202-732	202-724	202-714	202-704

42.5 43 43.5 44

Easy Fit - Supra Second Molars	Band ID	Seating Lug	Individual (1)	Introductory (150)	Professional (300)	Master (600)
MAXILLARY		With Lugs	206-725	206-721	206-711	206-701
		Without Lugs	206-730	206-722	206-712	206-702
MANDIBULAR		With Lugs	206-727	206-723	206-713	206-703
		Without Lugs	206-732	206-724	206-714	206-704

Easy Fit - Ultimate Molar Bands

Extra Attachments for Bands	
Texturizing	200-000
Small Cleat, 5mm	501-421
Reg Cleat, 6.9mm	501-423
Flat Ling Button	501-321
Curved Ling Button	501-322
Ling Sheath w/no lock No Window .036	502-600
Ling Sheath w/lock indent window .036	502-602
Ling Sheath UR/LL Mes-Dist hk .036	502-605

Features Include:

- ✓ Shape according to Ormco Ultima bands
- ✓ Offers the best fit in a fully proportioned band
- ✓ Straight proximal walls allow for fast setting
- ✓ Kit contains 1/2 rights, 1/2 lefts
- ✓ Attachments come in .018 and .022 Slots
- ✓ Permanent Laser Markings
- ✓ Band sizes:
Upper & Lower 1st Molars sizes 5-36
Upper 2nd Molars sizes 97-00, 1-28
Lower 2nd Molars sizes 1-32
- ✓ Some bands are coded with double numbers.
The mesial numbering system is similar to Ormco and the Distal numbering system is similar to UTK.

1st Molars																															
Band Size																															
5	6	7	8	9	10	11	12	13	14	15	16	17	18	19	20	21	22	23	24	25	26	27	28	29	30	31	32	33	34	35	36

2nd Molars																															
Upper Size	Lower Size																														
97	98	99	00	1	2	3	4	5	6	7	8	9	10	11	12	13	14	15	16	17	18	19	20	21	22	23	24	25	26	27	28
1	2	3	4	5	6	7	8	9	10	11	12	13	14	15	16	17	18	19	20	21	22	23	24	25	26	27	28	29	30	31	32

Easy Fit - Ultimate First Molars	Band ID	Seating Lug	Individual (1)	Introductory (200)	Professional (400)	Master (800)
MAXILLARY		With Lugs	200-725	200-721	200-711	200-701
		Without Lugs	200-730	200-722	200-712	200-702
MANDIBULAR		With Lugs	200-727	200-723	200-713	200-703
		Without Lugs	200-732	200-724	200-714	200-704

Easy Fit - Ultimate Second Molars	Band ID	Seating Lug	Individual (1)	Introductory (200)	Professional (400)	Master (800)
MAXILLARY		With Lugs	205-725	205-721	205-711	205-701
		Without Lugs	205-730	205-722	205-712	205-702
MANDIBULAR		With Lugs	205-727	205-723	205-713	205-703
		Without Lugs	205-732	205-724	205-714	205-704